

Technical Rider “ H O M A N “



The latest version of the technical rider can be downloaded at www.jeburo.be/homan
By programming this performance the organizer commits to the needs and technical requirements requested and accepts the technical terms. If one of the requirements is not met this could lead to the cancellation of the contract

Contacts

Booking info & Contract

Emma Ketels : (BE) +32 495 89 31 63
emma@jeburo.be

General Technician

Benjamin Eugène: (BE) +32 498 52 52 57
trampoline@gmail.com

General Technician & Light design

Seppe Brouckaert : (BE) + 32 496 99 61 54
brouckaertseppe@gmail.com

Sound Creator / Artist

Vejde Grind : (SE) +46 7 00 13 28 17
vejde.grind@hotmail.com

Contact person on location / Artist

Vincent Bruyninckx : (BE) +32 47 6 63 69 11
vincent@collectifmalunes.be

General info

- Duration	1h
- Artists	2
- Technician H O M A N	1
- Emma Ketels (diffusion)	1
- Technicians theater	3
- Recommended age	8+
- Audience capacity	+200
- Setting	Frontal

Typical schedule

-Day before the performance:

13.00: Build up for sound and light

19.00: Tech run

-Day of the performance:

09.00-12.00: Technical adaptations

12.00-13.00: Lunch

13.00-19.00: Training + rehearsals

20.00-21.00: Showtime

21.00-23.00: Strike + loading

Technical info

Stage

- Frontal stage setting (No audience on the sides).
- Black box setting, surrounded by black Molton curtains (The possibility to make a full black out is necessary).
- Preferable a flat-floor theatre, where the first audience row is on the same level as the stage.
- Minimum space dimension 10m x 10m. Surface needs to be hard, levelled, flat (no relief), dry and clean (contact us in case of any doubts).
- No dance mats installed, the company will provide their own mats. (Marley)
- The organizer provides 3 rolls of black tape for Marley (dance floor) per show.

Sound

IMPORTANT: We use our own wireless microphone system, that is built in to the metal wheels that are manipulated on stage. The systems sends on the frequency range: 823 - 832 MHz. The organizer needs to make sure that the systems can be used in the performance space and that it won't interfere with any other technology.

H O M A N provides:

- Sound control on laptop connected to audio interface/sound card (Output: Jack 6.3 mm x2 mono)
- Wireless microphone system

Theater provides:

- Qualitative PA-system
- Sound console with at least 4 inputs and 4 outputs
- 2 wedges on stage
- 2x Subwoofer placed on the side of the stage (Also serves visual purposes)
- Wireless sender and receiver (Sennheiser or Shure)
- Cable to connect audio interface with the sound console
- Sufficient amount of XLR's to connect own microphones
- 2x Microphone stands + clamps.
- 5 x AA Alkaline batteries per show
- Ideally the Subwoofers are driven separately

Light

Dimmer Channels

The show needs a total of 48 dimmer channels.

Lighting Console

The lighting needs to be controlled from a Chamsys Magicq lighting console. If the venue isn't able to provide a Chamsys Magicq console, let us know and we will look together at other options.

Lighting Fixtures

At the end of this technical rider you can find a list of all the fixtures that are needed for H O M A N . All of these fixtures, gels and accessories need to be provided by the theatre venue.

Also attached are 2 lighting plots: Grid and Floor lights. Please have a thorough look at these documents. If there is any unclarity, please let us know.

Haze

- The organizer provides a good quality hazer.
- The company brings its own smoke machine (fogger)

Power/electricity

- The theater should provide enough power cables and multi-plugs.

Practical info

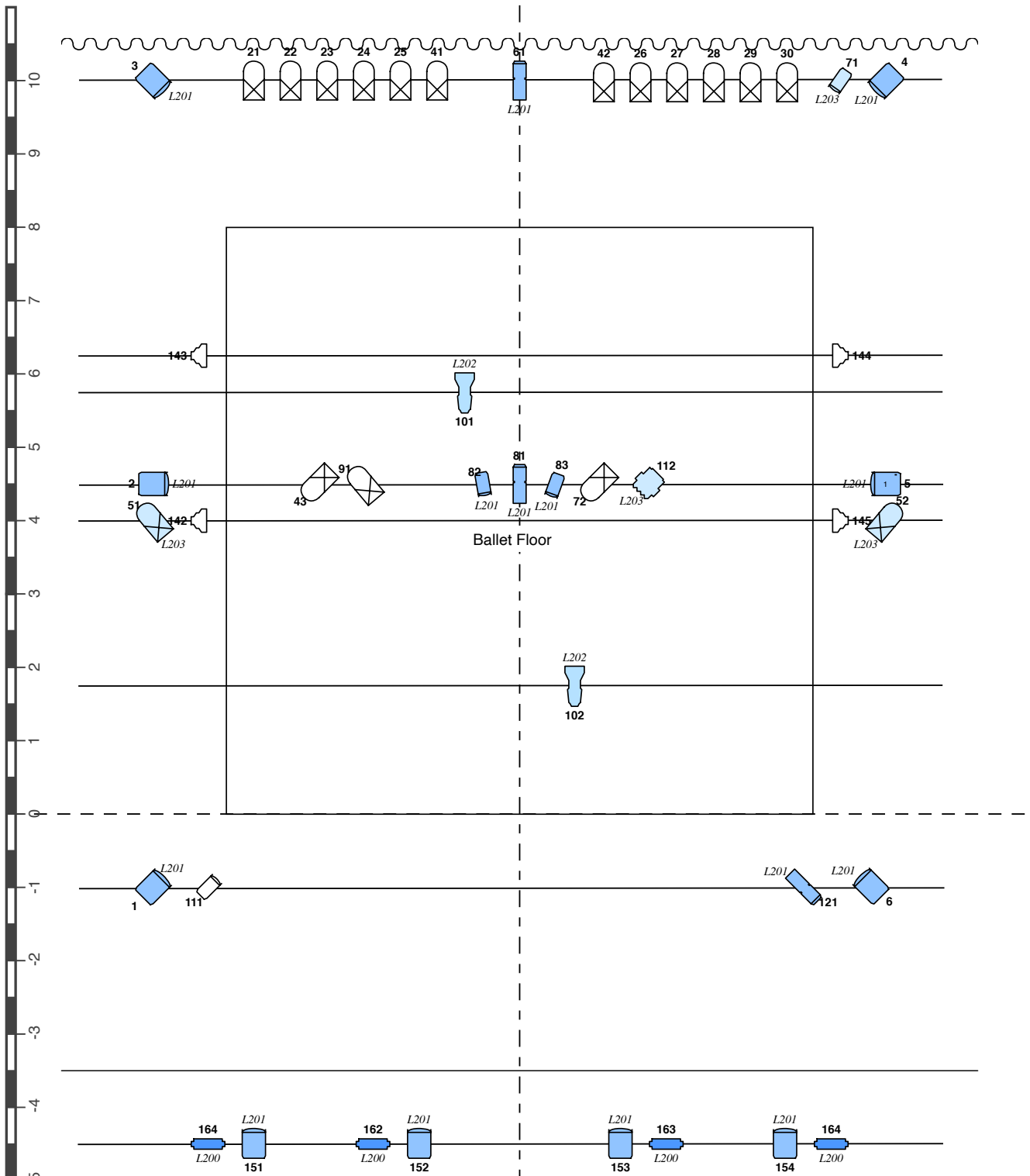
Parking

- We need access to the theatre with a van + trailer
- The theater provides a secure parking spot for all vehicles (max 3)

Dressing room

- The theater provides a heated space that can be locked.
- The artists + technician should have access all day to this space.
- A shower is strongly recommended!

Don't hesitate to contact us in case you have more questions!

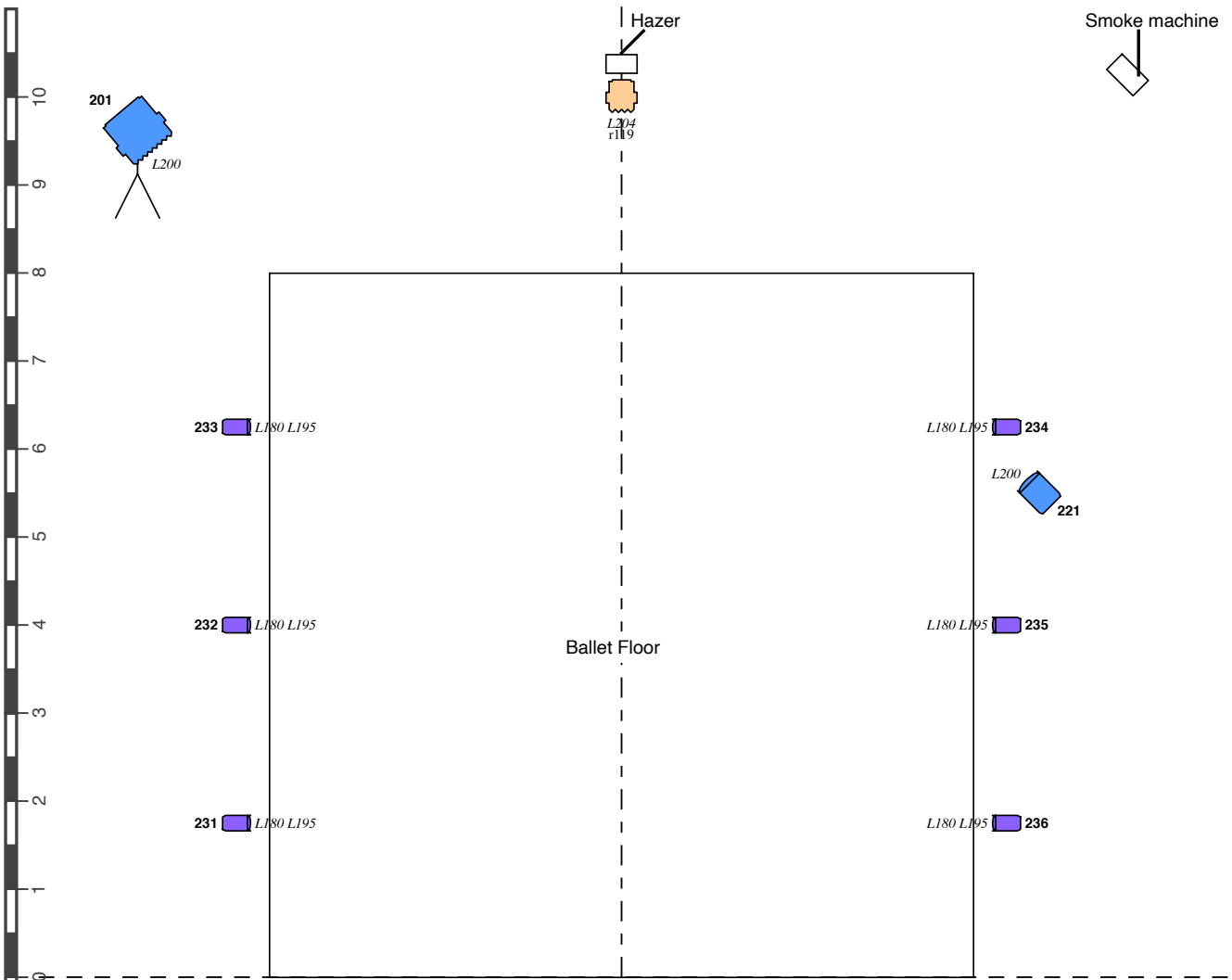


Company : Collectif Malunés
 Production : HOMAN
 Light design: Seppe Brouckaert
 Technical contact: Benjamin Eugène
 +32 498 52 52 57 trampoline@gmail.com

Legend

	PC 1 kW		Profilespot narrow 1 kW
	PC 2 kW		Profilespot wide 1 kW
	Par 64 CP62		Fresnel 5 kW x 1
	Fresnel 1kW		RGB Ledpar
	Venue light		Hazer/Smoke machine

All PC and Fresnel fixtures with barndoors/Narrow profilespots with iris
 Upstage par64 can be 2 x sixbar



Company : Collectif Malunés
 Production : HOMAN
 Light design: Seppe Brouckaert
 Technical contact: Benjamin Eugène
 +32 498 52 52 57 trampoline@gmail.com

Legend

	PC 1 kW		Profilespot narrow 1 kW
	PC 2 kW		Profilespot wide 1 kW
	Par 64 CP62		Fresnel 5 kw x 1
	Fresnel 1kW		RGB Ledpar
	Venue light		Hazer/Smoke machine

All PC and Fresnel fixtures with barndoors/Narrow profilespots with iris
 Upstage par64 can be 2 x sixbar

