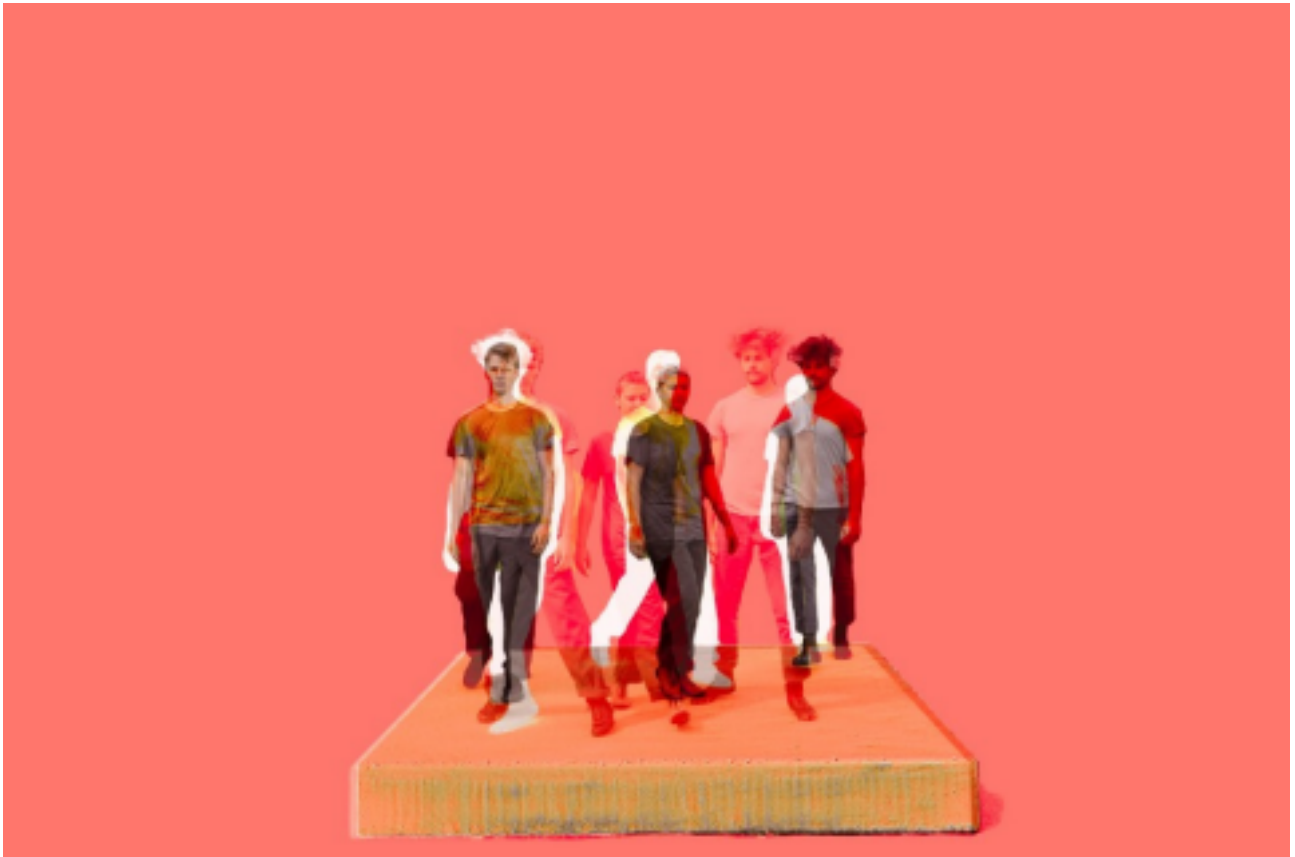


**Theatre version**

---

# **CÉCILE**

## **Sinking Sideways**



**Contact:**

Xenia Bannuscher/Dries Vanwalle/Raff Pringuet

[info@sinkingsideways.de](mailto:info@sinkingsideways.de)

+32 478 036 776 (Dries)

Leoni Grützmacher (production)

[production@sinkingsideways.de](mailto:production@sinkingsideways.de)

THIS TECHNICAL RIDER IS AN INTEGRAL PART OF THE CONTRACT. ADJUSTMENTS CAN BE MADE IF REQUIRED DUE TO SPECIFIC FEATURES OF THE VENUE BUT ONLY IN NEGOTIATION WITH THE COMPANY.

---

## **GENERAL**

**Duration:** 55min with no intermission

**Team on tour:** 3 performers, 1 technician

**Audience:** Frontal audience

**Recommended age:** Adult audience, 12+

**Max. audience capacity:** 400

Due to the physical limits, the show can be performed max. once a day. In case of performing several days in a row, the show can be played max. 3 days in a row!

### **Our tilting stage construction**

We have a free-standing stage construction (3m width x 3,75m depth x 0.4m height), The stage will tilt during the show from flat to an angle of 50° (3m width x 3,75 depth x 3,15 high). The stage will be standing centered on the stage of the venue. (see pictures/ see stage plan)

### **Required equipment**

- Schuko 230 volt on stage
- XLR or DMX (5 pin or 3 pin) connection from the stage to the light table.
- 2 Condenser mics (+ connection) on stage

### **Technicians of the house:**

1x light, 1x sound (both only required for set-up)

## **STAGE**

- A frontal stage configuration is needed. The audience is seated directly in front of the stage, not on the sides. (see stage plan)
- In case of a leveled stage floor: max. 50cm. (for visabilitie)
- The ideal stage dimension is 10m wide x 8m deep. and a minimum height of 600 cm.
- A hard, flat, solid, and even floor in good condition. No inclination or cracks. - Please provide pictures of the empty stage.
- The performance requires silence in the house. Therefore no latecomers are allowed during the performance.

## **LIGHT & SOUND**

The first draft of the light and sound plan is available (see stage plan). We will send an updated version as soon as possible.

## **SCHEDULE for a performance at 8 PM (exemplary):**

We arrive at the theater on the day of the performance at 10:00.

10:00-12:30 Arrival of the company, meeting technicians/organizer, lunch

12:30-16:30 Setting up stage and lights, focusing lights, setting up sound

16:30-17:30 Soundcheck and light cues

17:30-18:00 break

18:00-20:00 stage ready, warm-up artists

20:00-21:00 SHOW

21:00-21:30 cool down artists

21:30-22:30 build down

## **Transport/Accommodation**

- Details will be discussed by mail
- Accommodation to be supplied in instances where the arrival and/or return of the artists on the same day is not possible due to the distance or if multiple performing days are planned.
- A parking spot for our van (Renault Master 6m x 2,65m, license plate: 2-AMQ-720).
- Possibility to unload our equipment directly at the venue.

## **Costumes/Dressing rooms**

- A properly heated, clean, and secure dressing room with a mirror.
- An iron and ironing board if possible (for multiple shows)
- Towels and a shower are appreciated.
- An assortment of fruit, nuts, etc., and water is highly appreciated.

## **Food**

- details will be discussed by mail
- Dinner for 4 people OR per diems according to the official rate.
- 4 vegetarian meals, minimum 4 hours before the performance or 45 min. after the performance.
- Dinner should be a warm meal.

## Build-up/Build-down

The stage construction has to be built up **and** down **together with the artists and their team** (before and after the performance).

### Access to the stage:

Possibility to unload our equipment directly at the venu!

The biggest piece of our stage construction is 300cm long, 150cm high and 40cm wide. Access and transport to the stage must be possible, therefore **NO** narrow hallway and/or sharp corners are not doable with a big piece of 3 meters.

If the stage is not located on the same floor as the loading dock:

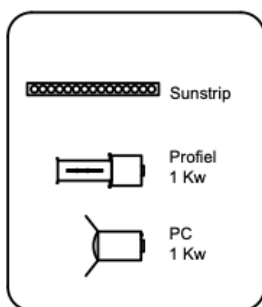
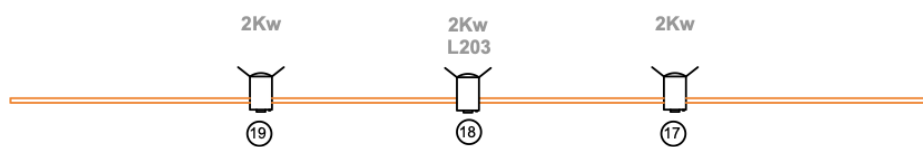
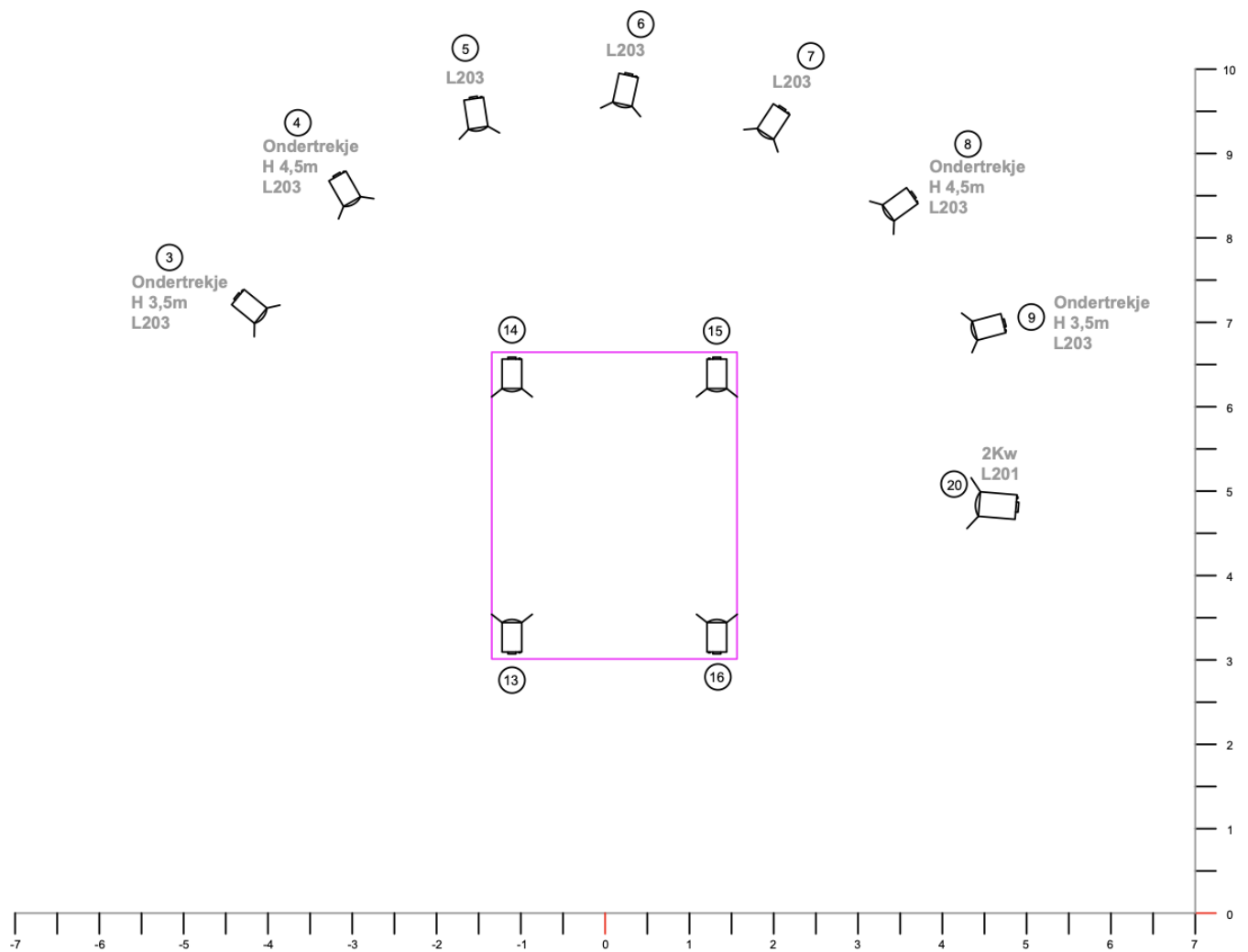
- Ideally: an elevator that fits a stage-piece of 300cm long.
- Otherwise: wide stairs that allow four people to carry at the same time.
  - Help with lifting would be highly appreciated in that case.

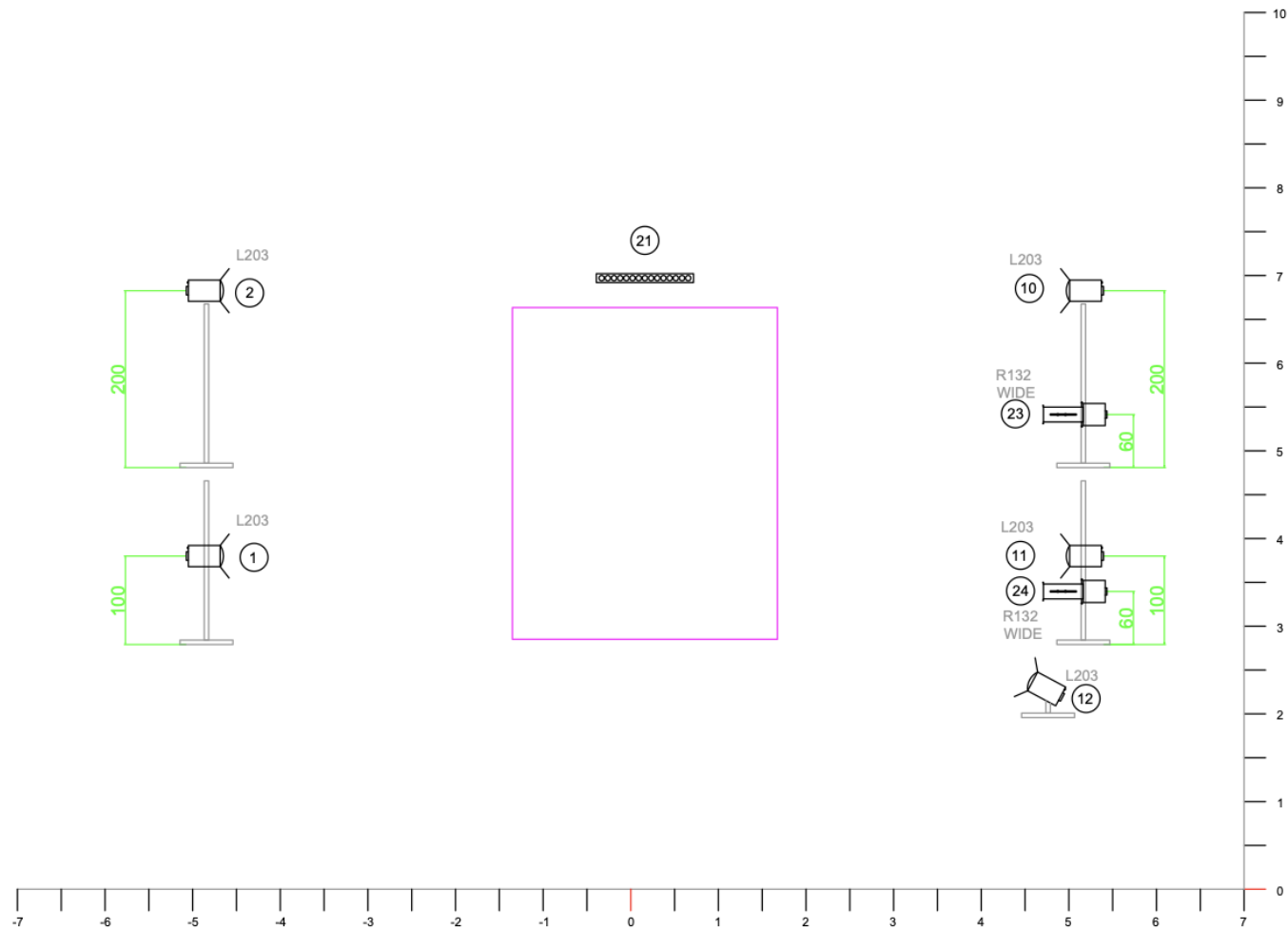
## MATERIAL LIST & STAGE PLAN:


Material:	Quantity	Specification
1KW PC (with Barndors)	x19	Filters: 13 x L203
1KW Profile (Wide)	x2	Filter: 2 x R132
2KW PC	x1	Filter: 1x 201
Sun Strip	x1	Active or passive.
Light stand (2m)	x2	
Light stand (1m)	x2	
Floor lamp stand	x1	
Onder trekje (Hight 4,5m)	x2	
Onder trekje (Hight 3,5m)	x2	
Speakers front of house	x2	Stereo
Monitors	X2	Stereo. standing on the side of the stage: in wings or between the light stands.
Condensor mike (+ low stand)	x2	Needs to fit under 40cm high stage.
Dmx or XLR (3pin or 5pin)	1x	From our stage construction to the light table. (Needs to go back behind the black curtain, so it's hidden behind the stage)

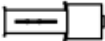
# Light plan 'Cécile'

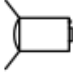
Cécile: Hanging lights (page 1)



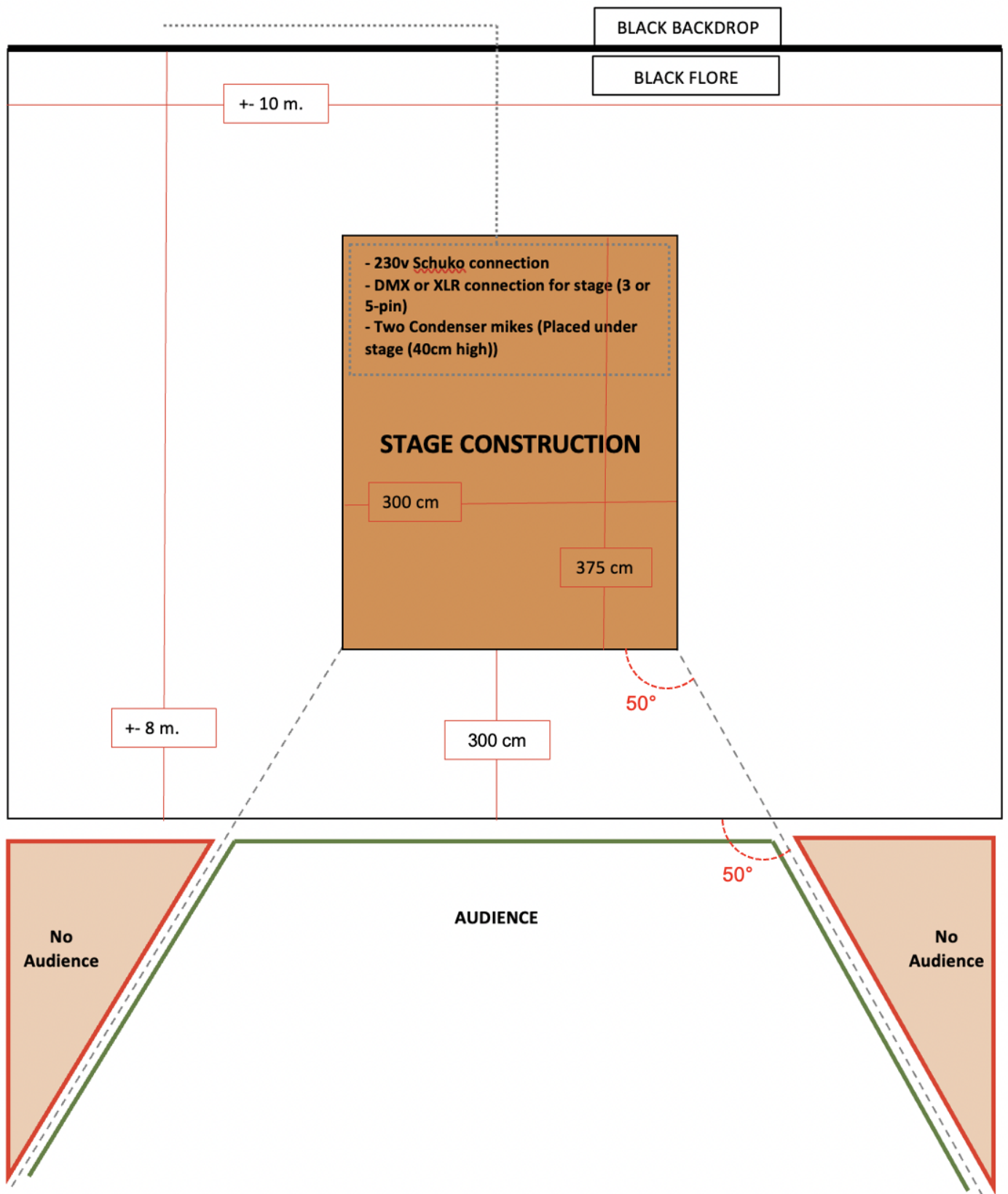


 Sunstrip

 Profiel  
1 Kw

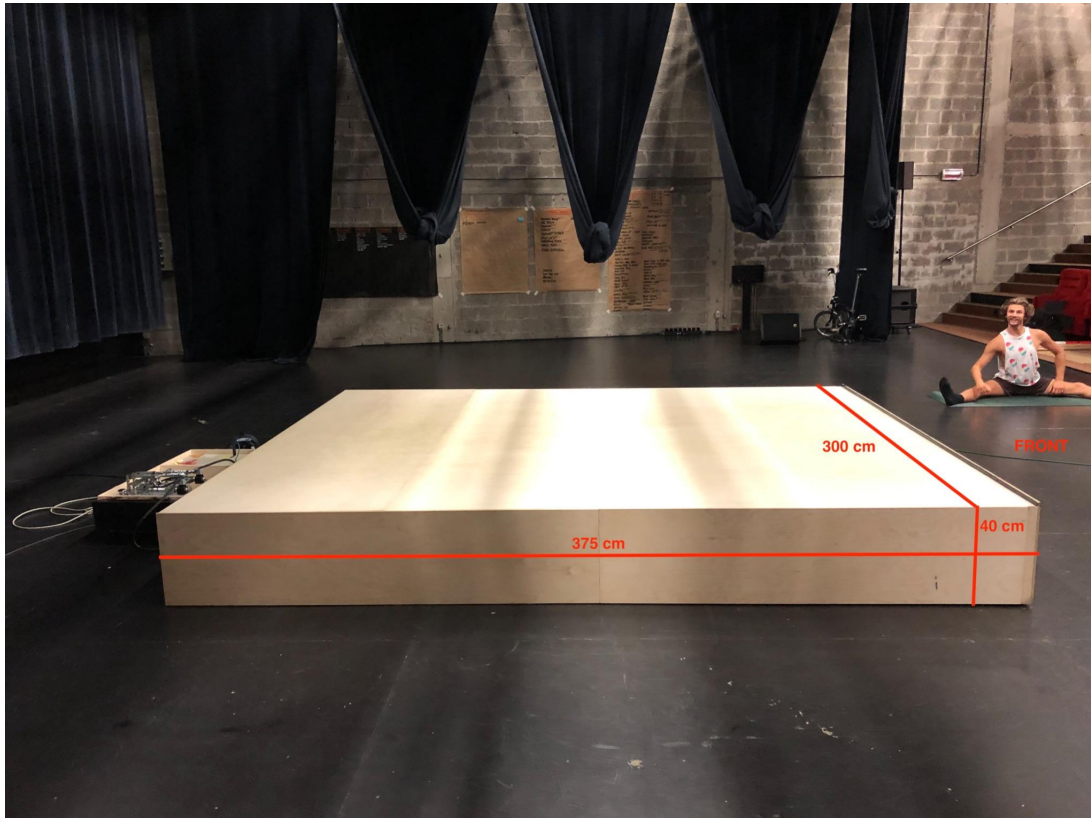
 PC  
1 Kw

## STAGE & AUDIENCE PLAN:



## PICTURES:

Stage construction: Flat (0°) - side view



Stage construction: Fully tilted (50°) - side view:

